

Utility of Hepatic Transaminases in Children With Concern for Abuse



WHAT'S KNOWN ON THIS SUBJECT: Routine screening of potentially abused children with hepatic transaminases has been recommended, using a threshold of 80 IU/L to determine the need for further testing, but practice is variable, and this threshold has not been validated.



WHAT THIS STUDY ADDS: This study identified abdominal injury in a significant fraction of potentially abused children with transaminases >80 IU/L.

abstract

OBJECTIVE: Routine testing of hepatic transaminases, amylase, and lipase has been recommended for all children evaluated for physical abuse, but rates of screening are widely variable, even among abuse specialists, and data for amylase and lipase testing are lacking. A previous study of screening in centers that endorsed routine transaminase screening suggested that using a transaminase threshold of 80 IU/L could improve injury detection. Our objectives were to prospectively validate the test characteristics of the 80-IU/L threshold and to determine the utility of amylase and lipase to detect occult abdominal injury.

METHODS: This was a retrospective secondary analysis of the Examining Siblings To Recognize Abuse research network, a multicenter study in children younger than 10 years old who underwent subspecialty evaluation for physical abuse. We determined rates of identified abdominal injuries and results of transaminase, amylase, and lipase testing. Screening studies were compared by using basic test characteristics (sensitivity, specificity) and the area under the receiver operating characteristic curve.

RESULTS: Abdominal injuries were identified in 82 of 2890 subjects (2.8%; 95% confidence interval: 2.3%–3.5%). Hepatic transaminases were obtained in 1538 (53%) subjects. Hepatic transaminases had an area under the receiver operating characteristic curve of 0.87. A threshold of 80 IU/L yielded sensitivity of 83.8% and specificity of 83.1%. The areas under the curve for amylase and lipase were 0.67 and 0.72, respectively.

CONCLUSIONS: Children evaluated for physical abuse with transaminase levels >80 IU/L should undergo definitive testing for abdominal injury. *Pediatrics* 2013;131:268–275

AUTHORS: Daniel M. Lindberg, MD,^{a,b} Robert A. Shapiro, MD,^c Emily A. Blood, PhD,^d R. Daryl Steiner, DO,^e and Rachel P. Berger, MD, MPH,^f for the ExSTRA investigators

^aDepartment of Emergency Medicine, Brigham & Women's Hospital, Boston, Massachusetts; ^bDivision of Emergency Medicine and ^dClinical Research Center, Boston Children's Hospital, Boston, Massachusetts; ^cMayerson Center for Safe & Healthy Children, Cincinnati Children's Medical Center, Cincinnati, Ohio; ^eCARE Center, Akron Children's Hospital, Akron, Ohio; and ^fDepartment of Pediatrics, Children's Hospital of Pittsburgh of University of Pittsburgh Medical Center, Pittsburgh, Pennsylvania

KEY WORDS

child abuse, abdominal injury, sensitivity, specificity, hepatic transaminases

ABBREVIATIONS

ALT—alanine aminotransferase
AST—aspartate aminotransferase
AUC—area under the curve
CI—confidence interval
CT—computed tomography
ExSTRA—Examining Siblings To Recognize Abuse
OR—odds ratio
ROC—receiver operating characteristic

Dr Lindberg conceptualized and designed the study, coordinated and supervised data collection, performed the analyses, drafted the initial manuscript, and approved the final manuscript as submitted; Drs Shapiro, Steiner, and Berger coordinated and supervised data collection, reviewed and revised the manuscript, and approved the final manuscript as submitted; and Dr Blood provided additional statistical analyses, reviewed and revised the manuscript, and approved the final manuscript as submitted.

www.pediatrics.org/cgi/doi/10.1542/peds.2012-1952

doi:10.1542/peds.2012-1952

Accepted for publication Oct 12, 2012

Address correspondence to Daniel M. Lindberg, MD, Department of Emergency Medicine, Brigham & Women's Hospital, 75 Francis St, Neville House, Boston, MA 02132. E-mail: dlindberg@partners.org

PEDIATRICS (ISSN Numbers: Print, 0031-4005; Online, 1098-4275).

Copyright © 2013 by the American Academy of Pediatrics

(Continued on last page)

Physical abuse is a significant source of morbidity and mortality in children,^{1,2} and intraabdominal injuries are second only to head injuries as a cause of death.³ In children with concern for physical abuse and an offered history of minor trauma, identifying an intraabdominal injury can increase the perceived likelihood of abuse because intraabdominal injuries are unlikely to result from minor trauma.^{4–9} Therefore, diagnosing an abusive intraabdominal injury can help to protect a child from future abuse, even if the injury itself would be self-limited. Whereas classic signs and symptoms of intraabdominal injury, such as abdominal tenderness, bruising, or distention, can increase concerns for abdominal injury, none of these findings is sufficiently sensitive.^{10–13}

For these reasons, expert statements have long recommended routine transaminase testing, with or without amylase and lipase testing, in children with concern for physical abuse.^{14–16} Nevertheless, past studies of transaminase screening have shown that practice is highly variable, with screening rates as low as 21%.^{13,17} To our knowledge, there are no published data to support the use of amylase and lipase testing in potentially abused children.

In 2009, we published an observational, multicenter study of screening in centers that endorsed transaminase screening as their standard of care for children with concern for physical abuse.¹³ Whereas intraabdominal injuries were recognized in only 3.2% of the population as a whole, they were identified in 15.8% of those with an initial aspartate aminotransferase (AST) or alanine aminotransferase (ALT) value >80 IU/L. However, even in centers where screening was considered to be standard of care, it was omitted in nearly a quarter of eligible patients, and definitive testing was

obtained in only 53% of subjects with elevated transaminases. These results also did not determine whether routine screening identified injuries that would have been missed if testing had been performed at the discretion of the abuse expert, or whether routine testing reduced testing variability according to race or ethnicity.

The main objective of this study was to validate the test characteristics of an 80-IU/L threshold for transaminases to detect occult intraabdominal injury in children evaluated for physical abuse. Our secondary objectives were to determine rates of abdominal screening after the publication of our previous study and to determine test characteristics of amylase and lipase in children without transaminase elevation.

METHODS

This study was a retrospective secondary analysis of data from the Examining Siblings To Recognize Abuse (ExSTRA) research network, a multicenter, observational, cross-sectional network of 20 child abuse teams that endorsed a common screening protocol for the siblings and household contacts of children younger than 10 years old evaluated for potential physical abuse.¹⁸ All participating centers and the data coordinating center obtained approval from their local Institutional Review Board to conduct the main study with a waiver of informed consent. This secondary analysis of data that had been collected for another purpose, and that had been purged of all patient identifiers, was determined by each Institutional Review Board to be exempt from review as human subjects research.

Patients and Centers

Between January 15, 2010, and April 30, 2011, 2890 index children were enrolled in the ExSTRA research network and

form the cohort for this analysis. Subjects were enrolled if they were <10 years (120 months) old and had undergone subspecialty evaluation for concerns of physical abuse. To prevent inclusion bias, each center established an independent method to determine the number of eligible subjects and enrolled >90% of eligible subjects on the basis of monthly censuses. Data from siblings and other contacts of enrolled index children were abstracted for the primary analysis but were not used for this secondary analysis. Each participating center had ≥1 dedicated child abuse physician. Of 20 participating centers, 8 had previously endorsed routine screening as participants in our previous study. For this study, no protocol for abdominal injury screening was endorsed and no interventions were undertaken to increase screening.

Child abuse physicians recorded results of hepatic transaminases and any further testing to diagnose intraabdominal injury. A subject was considered to have undergone definitive testing for intraabdominal injury if he or she had an abdominal computed tomography (CT), MRI, surgical exploration, or autopsy. Intraabdominal injury was defined as radiographic or pathologic evidence of injury to the liver, spleen, pancreas, bowel, mesentery, kidney, adrenal, bladder, or abdominal vasculature. Bony injuries (of the spine, ribs, or pelvis) or isolated elevation of laboratory studies (as when elevated lipase was considered to diagnose traumatic pancreatitis) were not considered intraabdominal injuries. The ultimate perceived likelihood for abuse was coded for each subject by the consulting child abuse physician by using a previously published 7-point scale in which 7 represents definite inflicted injury.¹⁹

Statistical Analysis

Categorical variables were compared between those tested and not tested by using χ^2 tests, and continuous variables were compared by using the Mann-Whitney *U* test. Odds ratios (ORs) of testing and definitive imaging were calculated for dichotomous variables. Sensitivity, specificity, and likelihood ratios for detecting abdominal injuries were calculated for transaminase levels by using the highest value (AST or ALT) of the first transaminases obtained, and for amylase and lipase. Receiver operating characteristic (ROC) analysis was undertaken for transaminases, amylase, and lipase tests. Analyses were undertaken by using PASW Statistics 18 (IBM SPSS Statistics, IBM Corporation, Armonk, NY).

RESULTS

Of 2890 subjects enrolled, 82 (2.8%; 95% confidence interval [CI]: 2.3%–3.5%)

had ≥ 1 intraabdominal injury identified by any modality (abdominal CT, surgical exploration, or autopsy; Fig 1). Characteristics of the subjects with intraabdominal injuries identified are shown in Table 1. The perceived likelihood of abuse among children with intraabdominal injuries identified was high, with only 3 subjects (3.7%) having a level of concern that was ≤ 3 on the 7-point scale of abuse likelihood.¹⁹ Mortality was higher among subjects with intraabdominal injuries identified than in the overall ExSTRA cohort (9 of 82, 11.0%; 95% CI: 5.1%–19.8% for subjects with intraabdominal injuries; 73 of 2890, 2.5%; 95% CI: 2.0%–3.1% overall). Subjects with intraabdominal injuries identified were older than other subjects (median age of 20.5 months for those with intraabdominal injuries, 11.0 months for all others; *P* = .025).

The types of intraabdominal injuries identified are shown in Table 2. Among

the 82 children with intraabdominal injuries identified, the combination of abdominal bruising, tenderness or distention, or abnormal bowel sounds identified 47 children, for a sensitivity of 57.3%.

Hepatic Transaminases

A total of 1538 (53.2%) subjects underwent transaminase testing. Subjects who underwent transaminase screening were younger and less likely to be male. They had more nonabdominal injuries identified, were more likely to die or require ICU admission, and had a higher perceived likelihood of abuse at the completion of their evaluation (Table 3). Subjects who were of non-white race or Hispanic ethnicity were tested more frequently than white, non-Hispanic subjects (55.2% vs 51.2%; OR: 1.17; 95% CI: 1.01–1.37).

Among 1538 children with transaminases obtained, 298 (19.4%) underwent

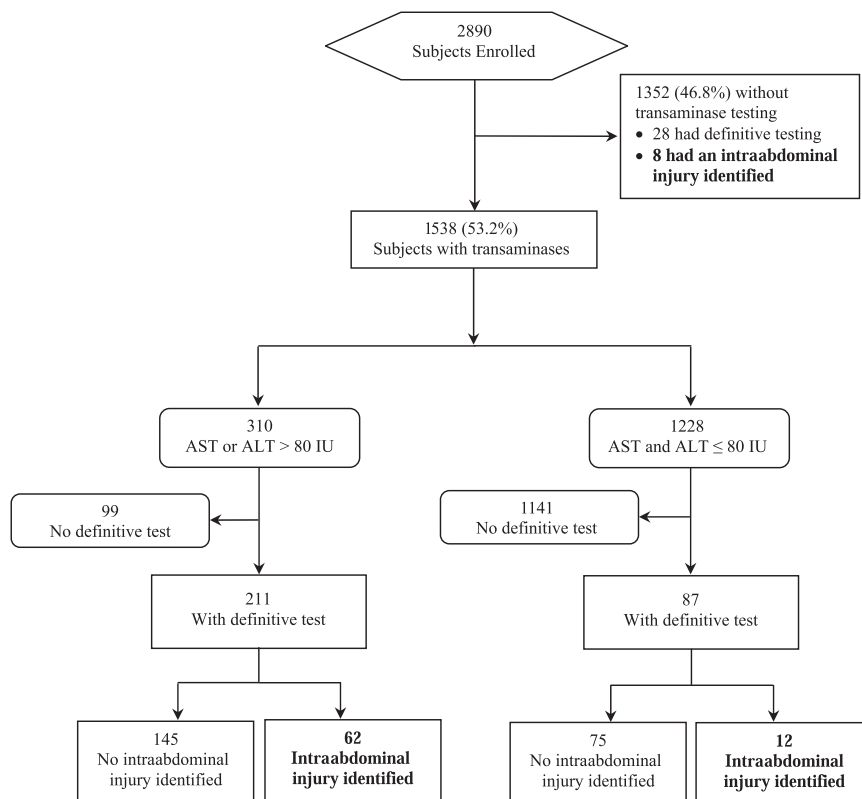


FIGURE 1
Patient flow.

TABLE 1 Characteristics of Subjects With Intraabdominal Injuries Identified (*n* = 82)

Age in months, median (IQR)	20.5 (5–34)
Male, <i>n</i> (%)	48 (58.5)
Race/ethnicity, <i>n</i> (%)	
White/non-Hispanic	31 (37.8)
Nonwhite or Hispanic	49 (59.8)
Unknown/not reported	2 (2.4)
Identified injuries, <i>n</i> (%) ^a	
Fractures	45 (54.9)
Traumatic brain injury	31 (37.8)
Cutaneous injury	60 (73.2)
None of the above	9 (11.0)
ICU admission, <i>n</i> (%)	43 (52.4)
Death, <i>n</i> (%)	9 (11.0)
Ultimate level of concern for abuse, <i>n</i> (%)	
1 (definitely not)	1 (1.2)
2 (no concern)	2 (2.4)
3 (mild concern)	0 (0.0)
4 (intermediate concern)	1 (1.2)
5 (very concerning)	6 (7.3)
6 (substantial evidence)	11 (13.4)
7 (definitely inflicted)	61 (74.4)

IQR, interquartile range; TBI, .

^a Results do not sum to 100% because some subjects had >1 injury identified.

definitive testing and 74 (4.8%) were diagnosed with an intraabdominal injury (Fig 1). Definitive testing included 276 subjects with abdominal CT, 35 with autopsy, 6 with abdominal MRI, and 3 with diagnostic laparotomy. Some subjects had >1 type of definitive testing.

Of the 1352 subjects who did not undergo transaminase testing, 28 (2.1%) underwent definitive testing and 8 (0.6%) had intraabdominal injuries identified. Eighteen subjects underwent abdominal CT or laparotomy directly

because of their history and symptoms, and 10 arrived dead and underwent autopsy.

Test characteristics of hepatic transaminases were similar to the previous cohort.¹³ The ROC curve for the higher of the 2 initial transaminases (AST or ALT) had an area under the curve (AUC) of 0.87 for the identification of intraabdominal injury (Fig 2). A threshold of 80 IU/L, chosen on the basis of the results of the previous study, had a sensitivity of 83.8%, a specificity of 83.1%, a positive likelihood ratio of 4.9, and a negative likelihood ratio of 0.20.

Abdominal CT

Abdominal CT was performed in 292 subjects, including 73 (25.0%) with intraabdominal injuries. Abdominal CT was obtained in 95 subjects with concerning clinical findings who did not have transaminase testing or who had transaminases ≤ 80 IU/L. Intraabdominal injuries were identified in 13 (13.7%) of such subjects and in 60 of 197 (30.5%) subjects when initial transaminases were >80 IU/L.

Pancreatic Enzymes

Lipase was measured in 990 subjects, including 216 who also had definitive testing for intraabdominal injury and 65 in whom an intraabdominal injury was identified. The AUC for lipase to identify an intraabdominal injury was

0.71 (Fig 2). By using threshold of 100 U/L, lipase had a sensitivity of 61.5% and a specificity of 79.2%.

There were 143 subjects who did not have elevated transaminases in whom lipase was >100 U/L, including 7 (4.9%) subjects with intraabdominal injuries identified. The use of this threshold of 100 U/L to identify abdominal injury in the population without elevated transaminases yielded the following test characteristics: sensitivity of 58.3%, specificity of 88.8%, and a positive predictive value of 4.9%. However, only 22 subjects (15.4%) in this group underwent definitive testing for intraabdominal injury; the true positive predictive value may be higher if occult intraabdominal injuries were missed in children who did not undergo definitive testing.

Amylase was measured in 1043 subjects, including 220 who also had definitive testing for intraabdominal injury and 64 in whom an intraabdominal injury was identified. The AUC for amylase to identify an intraabdominal injury was 0.67. By using a threshold of 50 U/L, amylase had a sensitivity of 62.5% and a specificity of 77.9%. Amylase was not elevated in any of the subjects with intraabdominal injury that was missed by both hepatic transaminases and lipase.

DISCUSSION

In this multicenter cohort of children <10 years old who were evaluated for physical abuse, 2.8% had an intraabdominal injury identified. Among children with an initial AST or ALT >80 IU/L, the posttest probability for intraabdominal injury was 20.0% (62 of 310) assuming that none of the subjects without definitive testing had an occult intraabdominal injury. These data support the use of a transaminase threshold of 80 IU/L as an indicator for further definitive

TABLE 2 Types of Intraabdominal Injuries Identified

Injured Organ	Initial Transaminases, <i>n</i> (%)		No Transaminases Obtained, <i>n</i> (%); (<i>n</i> = 8)	Total, <i>n</i> (%); (<i>n</i> = 82)
	>80 IU/L (<i>n</i> = 62)	≤ 80 IU/L (<i>n</i> = 12)		
Liver	37 (59.7)	2 (16.7)	1 (12.5)	40 (48.8)
Bowel/mesentery	18 (29.0)	6 (50.0)	5 (62.5)	29 (35.4)
Renal/adrenal	14 (22.6)	1 (8.3)	1 (12.5)	16 (19.5)
Pancreas	13 (21.0)	2 (16.7)	1 (12.5)	16 (19.5)
Spleen	5 (8.0)	1 (8.3)	2 (25.0)	8 (9.8)
Other ^a	2 (3.2)	3 (25.0)	0 (0.0)	5 (6.1)

The number of injuries may be more than the number of patients because some patients had multiple injuries.

^a Other injuries included 2 subjects with hemoperitoneum of unclear origin, 2 subjects with retroperitoneal bleeding, and 1 subject with an injury to the inferior vena cava.

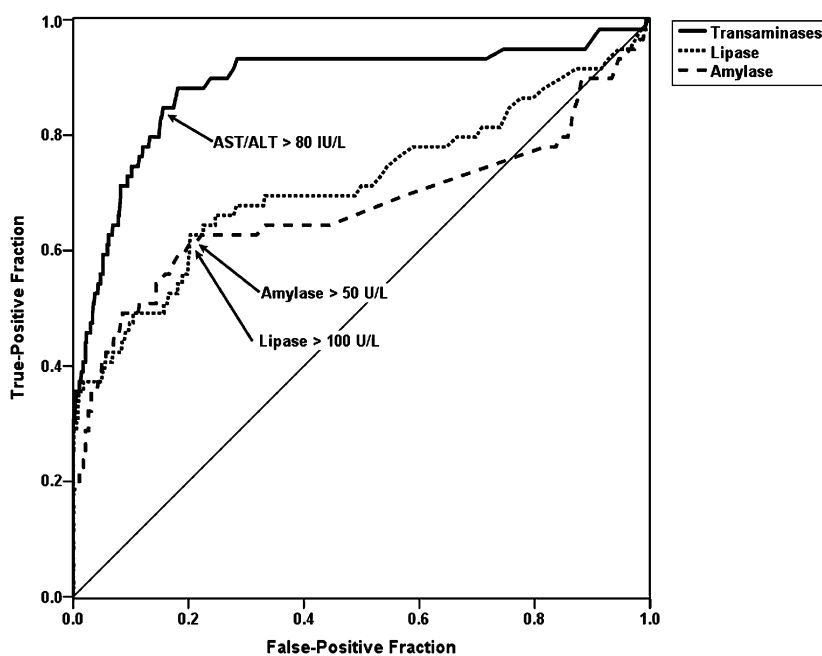
TABLE 3 Characteristics of Children With and Without Transaminase Testing

Characteristic	Transaminases Obtained (n = 1538)	Transaminases Not Obtained (n = 1352)	P
Age in months, median (IQR)	7 (3–18.9)	20 (7–48)	<.001
Male, n (%)	793 (51.6)	894 (66.1)	<.001
Race/ethnicity, n (%)			.09
White/non-Hispanic	658 (42.8)	628 (46.4)	
Nonwhite or Hispanic	835 (54.3)	679 (50.2)	
Unknown/not reported	45 (2.9)	45 (3.3)	
Identified injuries, n (%)			
Fractures	800 (52.0)	408 (30.2)	<.001
TBI	478 (31.1)	108 (8.0)	<.001
Cutaneous injury	792 (51.5)	815 (60.3)	<.001
ICU admission, n (%)	311 (20.2)	73 (5.4)	<.001
Death	55 (3.6)	18 (1.3)	<.001
Ultimate level of concern for abuse			<.001
1 (definitely not)	51 (3.3)	99 (7.3)	
2 (no concern)	226 (14.7)	387 (28.6)	
3 (mild concern)	210 (13.7)	227 (16.8)	
4 (intermediate concern)	174 (11.3)	167 (12.4)	
5 (very concerning)	209 (13.6)	146 (10.8)	
6 (substantial evidence)	286 (18.6)	114 (8.4)	
7 (definitely inflicted)	382 (24.8)	212 (15.7)	
ULTRA center ^a	856 (55.7)	547 (40.5)	<.001
Non-ULTRA center ^a	682 (44.3)	805 (59.5)	

IQR, interquartile range; TBI, traumatic brain injury; ULTRA, using liver transaminases to recognize abuse research network.
^a ULTRA centers had previously endorsed screening transaminases as a part of their standard of care in the evaluation of potentially abused children.

testing for abdominal injury in children with concern for physical abuse. Subjects with intraabdominal injuries identified were older than other subjects,

which is similar to results from our previous cohort.¹³ Intraabdominal injuries may be more common in older children if anatomic differences make

**FIGURE 2**

ROC curves for hepatic transaminases, amylase, and lipase and any identified abdominal injury. The AUCs for transaminases, lipase, and amylase were 0.87, 0.72, and 0.67, respectively.

them more likely to be victims of blunt trauma to the abdomen. Alternatively, intraabdominal injuries may be identified more frequently in children who are able to communicate about the presence of abdominal pain or tenderness or who are able to report trauma to the abdomen.

Testing was performed less commonly in this cohort than in our previous cohort of centers that endorsed transaminase screening as standard of care.¹³ One likely reason for this difference is the inclusion of centers that had not participated in the previous cohort and which may not have considered transaminase testing to be their standard of care. Centers that had participated in the previous cohort tested at higher rates than those that had not (856/1403 [61.0%] vs 682/1487 [45.9%]; OR: 1.85; 95% CI: 1.59–2.15). However, even centers that had previously endorsed routine testing tested at a lower rate than did the previous ULTRA cohort (61.0% vs 75.9%; OR: 0.50; 95% CI: 0.42–0.58), suggesting that the Hawthorne effect may have increased screening in the first study, even though both studies were meant to be observational. Although not as rigorous as a randomized trial, these 2 cohorts can serve as a comparison between routine testing (the previous cohort) and testing at the discretion of the clinical team (the current cohort).

When compared with the routine testing cohort, subjects in the discretionary cohort who had transaminases measured were more likely to have elevated transaminases (20.2% vs 15.4%), and those with elevated transaminases were more likely to undergo definitive imaging (68.1% vs 53.3%; OR: 1.87; 95% CI: 1.31–2.67). Physicians may have been more willing to pursue definitive testing because of the publication of the previous cohort's suggested threshold for screening or

because their initial clinical gestalt was higher in subjects they chose to test relative to subjects tested by protocol.

Whereas subjects who were of non-white race or Hispanic ethnicity were slightly more likely to be tested in this cohort, the converse was true in the previous cohort in which testing was considered to be standard of care (73.9% tested for nonwhites versus 78.8% for whites; OR: 0.76; 95% CI: 0.60–0.96), suggesting that an approach that relies on clinician discretion may be more subject to unconscious bias and more likely to result in racial disparities in testing.

The overall difference in the proportion of subjects with identified intra-abdominal injuries (3.2%; 95% CI: 2.4%–4.1%, in the routine testing cohort versus 2.8%; 95% CI: 2.3%–3.5%, in the discretionary testing cohort) was not significant (OR: 1.14; 95% CI: 0.79–1.64), but if the slightly higher rates in the routine cohort were confirmed in a larger sample, it would suggest that using a routine approach for intra-abdominal injury screening would require measuring an average of 47 additional sets of hepatic transaminases and 10 to 11 abdominal CTs to identify 1 additional abusive intra-abdominal injury.

Several experts have recommended using amylase and lipase to increase the sensitivity of hepatic transaminases for occult intra-abdominal injury, perhaps because pancreatic injuries are overrepresented among abused children relative to those with other sources of trauma.^{14,17,20} In our cohort, amylase failed to identify injuries missed by both transaminases and lipase, and the threshold suggested by ROC inspection was well within the normal range. A lipase threshold of 100 U/L identified injuries missed by transaminases, but our low estimate of the test's positive predictive value was

limited by the fact that most subjects with elevated lipase did not undergo definitive testing.

We did not determine the time of transaminase testing relative to the episode of abuse or to the time the child presented for evaluation. Because transaminases normalize over days or weeks,²¹ intra-abdominal injury screening must be undertaken in the early phases of an investigation for physical abuse and is not likely to be useful in children who have been in a protected environment for several weeks before their evaluation. Test characteristics may have been better than we report here if a significant number of our subjects had delayed testing.

Consultants were not asked to record their abdominal examination findings before knowing the results of hepatic transaminases or other testing for abdominal imaging. If clinicians were prompted to perform a more thorough physical examination after an intra-abdominal injury was identified, or if physical examination findings evolved over time, then the sensitivity of abdominal bruising, tenderness, distention, or abnormal bowel sounds may be overestimated.

Definitive testing was omitted for the vast majority of subjects with normal tests and for a significant fraction of those with elevated transaminases, amylase, or lipase. If intra-abdominal injuries were present in a significant number of subjects without elevated markers, our reported test sensitivities are overestimated. Conversely, if a significant number of injuries were present, but missed among subjects with elevated markers, then our specificity is underestimated.

One reason for omitted definitive studies may be the attention to increased use of CT among pediatric patients, with the associated increase in exposure to ionizing radiation. We feel

that the rate of intra-abdominal injuries identified in subjects with elevated transaminases justifies imaging in this cohort, although clinicians may consider MRI as an alternative to reduce exposure to radiation.²² Because abnormal transaminases will rapidly normalize in almost every case, even when an intra-abdominal injury is present, serial transaminase testing is not a substitute for imaging.²¹

Clinicians may also have chosen to forego definitive testing in children with elevated transaminases if the child was clinically stable and if the evidence of abuse was strong, even without the identification of an intra-abdominal injury. Because most occult abdominal injuries are clinically self-limited, this may be 1 reasonable approach.¹⁶ However, the identification of injury to an additional organ system may help establish the diagnosis of abuse in a contentious legal environment.²³

Because of the reported low sensitivity for intra-abdominal injury, we did not consider abdominal ultrasound to be a definitive test for intra-abdominal injury.²⁴ This is consistent with expert guidelines that support abdominal CT as the first-line test in children with concerns for abusive abdominal injury.^{22,25} No subject was diagnosed with an intra-abdominal injury by ultrasound that was not confirmed by another definitive study.

Our comparison of these data with those from our previous cohort is limited because inclusion criteria for the 2 cohorts were slightly different. Whereas this cohort included children as old as 120 months (10 years), the previous cohort was restricted to children <60 months old (5 years). Our cohort included a relatively small proportion (281; 9.7%) of subjects aged ≥ 60 months. Although rates of transaminase testing (46; 16.4%) were

significantly lower in this cohort ($P < .001$), we did not identify a significant difference in rates of transaminase elevation between subjects who were tested (11/46; 23.9%) or in injury identification among those with elevated transaminases (5/11; 45.5%).

CONCLUSIONS

Intraabdominal injuries are uncommon among children evaluated for physical abuse, but they carry significant mortality. Hepatic transaminases can increase sensitivity for occult intraabdominal injury relative to the clinical examination alone in children with concern for physical abuse. Children with elevated transaminases (>80 IU/L) should undergo definitive testing for abdominal injury, such as CT scan.

ACKNOWLEDGMENTS

The ExSTRA investigators are as follows: Jayme Coffman, MD (Cook Children's Hospital, Fort Worth, TX); Deb Bretl, APNP (Children's Hospital Wisconsin, Wauwatosa, WI); Nancy Harper, MD (Driscoll Children's Hospital, Corpus Cristi, TX); Katherine Deye, MD (Children's National Medical Center, Washington, DC); Antoinette L. Laskey, MD, and Tara Harris, MD (Riley Hospital for Children, Indianapolis, IN); Yolanda Duralde, MD (Mary Bridge Children's Health Center, Tacoma, WA); Marcella Donaruma-Kwoh, MD (Texas Children's Hospital, Houston, TX); Daryl Steiner, DO (Akron Children's Hospital, Akron, OH); Ken Feldman, MD (Seattle Children's Hospital, Seattle, WA); Kimberly Schwartz, MD (University of Massachusetts Medical Center, Worcester, MA); Robert A. Shapiro, MD, and Mary

Greiner, MD (Cincinnati Children's Hospital Medical Center, Cincinnati, OH); Alice Newton, MD (Boston Children's Hospital, Boston, MA); Ivone Kim, MD (Children's Hospital Pittsburgh of University of Pittsburgh Medical Center); Kent Hymel, MD (Dartmouth-Hitchcock Medical Center, Lebanon, NH); Suzanne Haney, MD (Children's Hospital & Medical Center, Omaha, NE); Alicia Pekarsky, MD (SUNY Upstate Medical University, Syracuse, NY); Andrea Asnes, MD (Yale-New Haven Children's Hospital, New Haven, CT); Paul McPherson, MD (Akron Children's Hospital, Youngstown, OH); Neha Mehta, MD (Sunrise Children's Hospital, Las Vegas, NV); and Gwendolyn Gladstone, MD (Exeter Pediatric Associates, Exeter, NH).

REFERENCES

1. US Department of Health and Human Services. *Child Maltreatment 2010*. Washington DC: Administration for Children & Families, Administration on Children, Youth & Families, Children's Bureau; 2011
2. Sedlak AJ, Mettenburg J, Besena M, et al. *Fourth National Incidence Study of Child Abuse and Neglect (NIS-4): Report to Congress*. Washington DC: Department of Health and Human Services; 2010
3. Schnitzer PG, Ewigman BG. Child deaths resulting from inflicted injuries: household risk factors and perpetrator characteristics. *Pediatrics*. 2005;116(5). Available at: www.pediatrics.org/cgi/content/full/116/5/e687
4. Coant PN, Kornberg AE, Brody AS, Edwards-Holmes K. Markers for occult liver injury in cases of physical abuse in children. *Pediatrics*. 1992;89(2):274-278
5. Joffe M, Ludwig S. Stairway injuries in children. *Pediatrics*. 1988;82(3 pt 2):457-461
6. Rivara FP, Alexander B, Johnston B, Soderberg R. Population-based study of fall injuries in children and adolescents resulting in hospitalization or death. *Pediatrics*. 1993;92(1):61-63
7. Chiavillo CT, Christoph RA, Bond GR. Stairway-related injuries in children. *Pediatrics*. 1994;94(5):679-681
8. Huntimer CM, Muret-Wagstaff S, Leland NL. Can falls on stairs result in small intestine perforations? *Pediatrics*. 2000;106(2 pt 1):301-305
9. Wang MY, Kim KA, Griffith PM, et al. Injuries from falls in the pediatric population: an analysis of 729 cases. *J Pediatr Surg*. 2001;36(10):1528-1534
10. Hennes HM, Smith DS, Schneider K, Hegenbarth MA, Duma MA, Jona JZ. Elevated liver transaminase levels in children with blunt abdominal trauma: a predictor of liver injury. *Pediatrics*. 1990;86(1):87-90
11. Roaten JB, Partrick DA, Bensard DD, et al. Visceral injuries in nonaccidental trauma: spectrum of injury and outcomes. *Am J Surg*. 2005;190(6):827-829
12. Gross M, Lynch F, Cauty T Sr, Peterson B, Spear R. Management of pediatric liver injuries: a 13-year experience at a pediatric trauma center. *J Pediatr Surg*. 1999;34(5):811-816, discussion 816-817
13. Lindberg D, Makoroff K, Harper N, et al; ULTRA Investigators. Utility of hepatic transaminases to recognize abuse in children. *Pediatrics*. 2009;124(2):509-516
14. Jenny C; Committee on Child Abuse and Neglect. Evaluating infants and young children with multiple fractures. *Pediatrics*. 2006;118(3):1299-1303
15. Herr S, Fallat M. Abusive abdominal and thoracic trauma. *Clin Pediatr Emerg Med*. 2006;7(3):149-152
16. Schonfeld D, Lee LK. Blunt abdominal trauma in children. *Curr Opin Pediatr*. 2012;24(3):314-318
17. Lane WG, Dubowitz H, Langenberg P. Screening for occult abdominal trauma in children with suspected physical abuse. *Pediatrics*. 2009;124(6):1595-1602
18. Lindberg DM, Shapiro RA, Laskey AL, Pallin DJ, Blood EA, Berger RP. Prevalence of injuries in the siblings and household contacts of abused children. *Pediatrics*. 2012;130(2):193-201
19. Lindberg DM, Lindsell CJ, Shapiro RA. Variability in expert assessments of child physical abuse likelihood. *Pediatrics*. 2008;121(4). Available at: www.pediatrics.org/cgi/content/full/121/4/e945
20. Trokel M, Discala C, Terrin NC, Sege RD. Patient and injury characteristics in abusive abdominal injuries. *Pediatr Emerg Care*. 2006;22(10):700-704
21. Baxter AL, Lindberg DM, Burke BL, Shults J, Holmes JF. Hepatic enzyme decline after

- pediatric blunt trauma: a tool for timing child abuse? *Child Abuse Negl.* 2008;32(9):838–845
22. American College of Radiology. *ACR Appropriateness Criteria: Suspected Physical Abuse—Child*. Reston, VA: American College of Radiology; 2009
 23. Slovis TL, Strouse PJ, Coley BD, Rigsby CK. The creation of non-disease: an assault on the diagnosis of child abuse. *Pediatr Radiol.* 2012;42(8):903–905
 24. Karam O, La Scala G, Le Coultre C, Chardot C. Liver function tests in children with blunt abdominal traumas. *Eur J Pediatr Surg.* 2007;17(5):313–316
 25. Kleinman PK, Di Pietro MA, Brody AS, et al. Diagnostic imaging of child abuse. *Pediatrics.* 2009;123(5):1430–1435

(Continued from first page)

FINANCIAL DISCLOSURE: Drs Lindberg, Steiner, and Shapiro have provided paid expert testimony for prosecution and defense in cases of alleged child physical abuse; and Drs Berger and Blood have indicated they have no financial relationships relevant to this article to disclose.

FUNDING: Supported by a grant from the Health Resources and Services Administration/Maternal and Child Health Bureau, Emergency Medical Services for Children Program (H34MC19346-01-02). Dr Lindberg's effort is funded in part by an Eleanor and Miles Shore Fellowship for Scholars in Medicine from Harvard Medical School. The funders played no role in the design and conduct of the study; collection, management, analysis, and interpretation of the data; or preparation, review, or approval of the manuscript.

Utility of Hepatic Transaminases in Children With Concern for Abuse
Daniel M. Lindberg, Robert A. Shapiro, Emily A. Blood, R. Daryl Steiner, Rachel P. Berger and for the ExSTRA investigators
Pediatrics 2013;131;268; originally published online January 14, 2013;
DOI: 10.1542/peds.2012-1952

Updated Information & Services	including high resolution figures, can be found at: /content/131/2/268.full.html
References	This article cites 22 articles, 13 of which can be accessed free at: /content/131/2/268.full.html#ref-list-1
Citations	This article has been cited by 7 HighWire-hosted articles: /content/131/2/268.full.html#related-urls
Subspecialty Collections	This article, along with others on similar topics, appears in the following collection(s): Administration/Practice Management /cgi/collection/administration:practice_management_sub
Permissions & Licensing	Information about reproducing this article in parts (figures, tables) or in its entirety can be found online at: /site/misc/Permissions.xhtml
Reprints	Information about ordering reprints can be found online: /site/misc/reprints.xhtml

PEDIATRICS is the official journal of the American Academy of Pediatrics. A monthly publication, it has been published continuously since 1948. PEDIATRICS is owned, published, and trademarked by the American Academy of Pediatrics, 141 Northwest Point Boulevard, Elk Grove Village, Illinois, 60007. Copyright © 2013 by the American Academy of Pediatrics. All rights reserved. Print ISSN: 0031-4005. Online ISSN: 1098-4275.

American Academy of Pediatrics

DEDICATED TO THE HEALTH OF ALL CHILDREN™



PEDIATRICS®

OFFICIAL JOURNAL OF THE AMERICAN ACADEMY OF PEDIATRICS

Utility of Hepatic Transaminases in Children With Concern for Abuse
Daniel M. Lindberg, Robert A. Shapiro, Emily A. Blood, R. Daryl Steiner, Rachel P.
Berger and for the ExSTRA investigators
Pediatrics 2013;131;268; originally published online January 14, 2013;
DOI: 10.1542/peds.2012-1952

The online version of this article, along with updated information and services, is
located on the World Wide Web at:
</content/131/2/268.full.html>

PEDIATRICS is the official journal of the American Academy of Pediatrics. A monthly publication, it has been published continuously since 1948. PEDIATRICS is owned, published, and trademarked by the American Academy of Pediatrics, 141 Northwest Point Boulevard, Elk Grove Village, Illinois, 60007. Copyright © 2013 by the American Academy of Pediatrics. All rights reserved. Print ISSN: 0031-4005. Online ISSN: 1098-4275.

American Academy of Pediatrics

DEDICATED TO THE HEALTH OF ALL CHILDREN™

