



Scientific Assembly
PHILADELPHIA, PA **23**



ACEP23 CAREER GUIDE

Set yourself up for success

Protect your income with Disability Insurance from Pattern.

Safeguard your career investment in
just three easy steps:

1 Request Your Quotes

Fill out our quick and simple form. We'll get busy collecting your personalized quotes from the top five providers.

2 Compare Your Options

Talk online with an advisor, compare and understand what you're buying.

3 Secure Your Policy

We will handle the paperwork so you can get back to doing what you do best.



**Request Your
Disability Insurance
Quotes Today**



ACEP IS YOUR PROFESSIONAL SUPPORT SYSTEM

The College strives to help you build a long, fulfilling career in emergency medicine.

CAREER TRANSITION AND CONTRACT SUPPORT

As evidenced by APP's sudden closure this summer, it helps to have support when navigating unexpected career challenges. ACEP worked quickly to expand its career transition resources, while providing both individual and broader support for those affected. The College sent a strong letter to the affected hospitals urging them to "do everything within your means to ensure emergency physicians providing care during this difficult time are (1) appropriately compensated per their original or current contract and (2) protected by the continuation of their malpractice coverage and other benefits, and (3) assured of your commitment to them and the continuity of care for their patients."

ACEP hosted a webinar with legal experts to help those affected better understand their rights that is available to watch on-demand. Find this and other related resources, including a new contract toolkit, at acep.org/contracttoolkit.



ONSITE JOB FAIR

Looking for new opportunities while you're here in Philly? Don't forget about the EMRA Job and Fellowship Fair, open to job seekers at all stages of their careers, held 5-7 p.m. on Oct. 9 in the Exhibit Hall D on the 200 level.

EMPLOYER TRANSPARENCY

We created the ACEP Open Book to empower you to take control of your unique career journey. This tool offers valuable insights on employer group structure, leadership, employment policies and more. It's now easy to do your research on employers so you can make informed decisions.

Visit openbook.acep.org and get started!



ONLINE CAREER CENTER

ACEP members gain exclusive access to a robust job board and career resources, thanks to our partnership with emCareers.org. The job board is filled with hundreds of career opportunities, and you also can get a CV review with leaders in emergency medicine and set up job-alerts to help find your dream position.

Visit acep.org/careers.



SALARY INSIGHTS

Every fall, ACEP Now provides a Compensation & Salary Report highlighting emergency medicine compensation reports that analyze trends by state, region, setting, and other variables. You can read this report in the September 2023 issue of ACEP Now. Look for copies in the Exhibit Hall, or find the complete archive at acep.org/salary-resources.



MEMBER DISCOUNTS

As an ACEP member, you have access to a variety of discounts from companies who want to support you both in and out of the emergency department. Save on contract review, financial planning, travel, student loans, insurance, wellness, and so much more. Start benefiting today at acep.org/memberbenefits.



COURSES TO TAKE YOUR CAREER TO THE NEXT LEVEL

ACEP23 is the perfect time to invest in yourself – your career path, your business acumen, even your personal finances. Use this break from the grind to pull back and think big picture about your personal goals. You have exciting plans, and we want to help you get there.

Note: All courses take place in the Pennsylvania Convention Center (PCC). Check the ACEP23 mobile app for the most up-to-date course information.

PROFESSIONAL ADVANCEMENT & LONGEVITY

Start building the career you want so you can have a long, satisfying and impactful tenure in the specialty.

Why EM? Building Your Long-Term EM Career (Non-CME Course)

Monday, Oct. 9 | 10:30-10:55 a.m.

Faculty: Andrew Muck, MD; Scott Wieters, MD; Stephen H. Anderson, MD, FACEP

Location: 109AB

This 25-minute session will include a look into what it takes to build a career as an emergency physician from experts in the field who know the ins and outs of emergency medicine.

Why EM? Career Pathways in Emergency Medicine (Non-CME Course)

Monday, Oct. 9 | 11-11:25 a.m.

Faculty: Leon C. Adelman, MD, MBA, FACEP, FAAEM; Nicholas Cozzi, MD; George C. Willis, MD, FACEP

Location: 109AB

There are many different career opportunities in EM. This panel will help explore some of the different pathways you can take as an emergency physician.

Why EM? Myth Busting with ACEP Leaders (Non-CME Course)

Monday, Oct. 9 | 12-12:25 p.m.

Faculty: Jamie Shoemaker, MD, FACEP; Alison J. Haddock, MD, FACEP; Ryan A. Stanton, MD, FACEP; Jessica Mason, MD

Location: 109AB

Don't believe everything you hear! ACEP board members and leaders will go through some of the hot topics of EM and dispel some of the myths surrounding EM as a career.

How to Evaluate a New Job and Negotiate the Contract

Tuesday, Oct. 10 | 10-10:25 a.m.

Faculty: Arlene Chung, MD, FACEP; Christopher S. Kang, MD, FACEP (moderator)

Location: 113ABC

From community to academic, ED jobs and contracts are as varied as our clinical sites. What should new grads and veterans alike look out for when evaluating job offers and what are effective negotiating strategies?

What's Next: 5 Strategies for Reinventing Your Career in Uncertain Times

Tuesday, Oct. 10 | 12:30-1:20 p.m.

Faculty: Jay A. Kaplan, MD, FACEP

Location: 118ABC

We often discuss the concept of burnout within the ever-changing landscape of Emergency Medicine, including decreased reimbursement, physician compensation, and job opportunities, as well as increased requirements, regulations, and litigation potential. In this maelstrom, many EM physicians may look towards non-traditional paths to supplement or supplant their careers. Should you obtain a new degree or certification? What administrative roles are available? What do you need to know about developing new products? What other jobs can best utilize the unique skillset we provide while maintaining job satisfaction? The speaker will explore options for EM Physicians wishing to transition into non-traditional work settings and channel their passion and hobbies into career success.

Taking Our Specialty Back: How to Get Involved

Tuesday, Oct. 10 | 2-2:25 p.m.

Faculty: Diane M. Birnbaumer, MD, FACEP

Location: 103ABC

Part of physician burnout is the feeling of a lack of control over their practice. This course offers concrete ways to take action on personal, institutional, local, state, and national levels to take back control of our practice.

Employment in the New Normal: How to Get a Job

Thursday, Oct. 12 | 9:30-9:55 a.m.

Faculty: Brian Stettler, MD, FACEP

Location: 113ABC

It's a different job market for emergency physicians than it was even a few years ago. Opportunities exist though for the new graduate, those changing careers, those in academics or the community, and even locums. How to go about getting a job in these settings, marketing yourself, and staying sane through the hiring process will be discussed.

BUSINESS OF EMERGENCY MEDICINE

Never has it been more important to be business savvy. Circle these opportunities to learn more about the latest perspectives on scope of practice, contract negotiations, surprise billing, workforce, reimbursement, and compensation.

Are Unions the Answer?

Monday, Oct. 9 | 3:30-4:20 p.m.

Faculty: Leon C. Adelman, MD, MBA, FACEP, FAAEM

Location: 119ABC

Emergency physicians are facing a host of systemic challenges, including burnout, boarding, staffing shortages, decreasing reimbursement, practice consolidation, and workforce projections. Residents in New York City's held their first strike by doctors since 1990. Emergency physicians in Oregon unanimously voted to organize into a union to improve patient care and working conditions. This session will provide an overview of the history of unions in medicine and how they function. The pros and cons will be discussed.

Jumping in With Both Feet: Considerations for Starting Your Own Group & Responding to an RFP: How to Win Your First (or Next) Contract

Monday, Oct. 9 | 4:30-5:20 p.m.

Faculty: Jay Mullen, MD, MBA, FACEP

Location: 111AB

There's a lot to consider if you're thinking about starting your own group. The first portion of this course will be a rapid-fire review of the essential elements to consider. The ability to respond to an RFP is a critical capability of a physician group. This second section of the lecture will provide an overview of the process and best practices involved in creating a response.

M-V-P! M-V-P! Are You Ready for MIPS Value Pathways in 2023?

Tuesday, Oct. 10 | 9:30-9:55 a.m.

Faculty: Michael A. Granovsky, MD, FACEP

Location: 103ABC

Just when you thought maybe you were getting the hang of MIPS reporting and documentation, CMS announced MIPS Value Pathways or MVP. ACEP submitted an emergency medicine-specific pathway to CMS that will be an option in 2023 for emergency physicians. The speaker will review the details of this new pathway and how to prepare for its implementation in 2023.

A Primer and Discussion on EM Employment Models (James D. Mills Memorial Lecture)

Tuesday, Oct. 10 | 12:30-1:20 p.m.

Faculty: James G. Adams, MD, FACEP; Christopher Kang, MD, FACEP (Moderator); Tracy G. Sanson, MD, FACEP; Robert W. Strauss, MD, FACEP

Location: 115ABC

An objective presentation of the pros/cons of each EM employment model (IC, locum tenens, physician group, hospital/system employee, county/city/state/federal employee, academic program, physician management company) and subsequent panel discussion and Q & A

Locums: Too Good to be True?

Tuesday, Oct. 10 | 3:30-3:55 p.m.

Faculty: Tracy G. Sanson, MD, FACEP

Location: 103ABC

Travel, flexibility, and amazing income. Is locums work an option for employment? Understand the history of locum work and the projected future of EM practice. Attend this session to demystify this type of practice and learn if a career in locums is right for you.

What I Learned My First Year as a Director

Wednesday, Oct. 11 | 8-8:50 a.m.

Faculty: Nida F. Degeysys, MD, FACEP

Location: 119AB

Hear about transitions in leadership and lessons learned. Tips and tricks for success in this leadership role will be discussed.

Know Your Worth: How Being the Junior Attending Makes You an Asset

Wednesday, Oct. 11 | 1-1:25 p.m.

Faculty: Frosso Adamakos, MD, FACEP

Location: 103ABC

While many physicians feel like being the "new graduate" in your department is a disadvantage, it is the opposite. You have so much to offer your department and in the process build the career you want. This session will show you how to do just that.

Reimbursement 101: The Latest Regarding ED Payments, Critical Care, Shared Visits and Observation

Wednesday, Oct. 11 | 12:30-12:55 p.m.

Faculty: Michael A. Granovsky, MD, FACEP

Location: 120ABC

With the new 2023 documentation changes for emergency medicine, significant changes will go into effect for the documentation of critical care, shared visits with non-physician providers, and observation medicine. During this lecture, the speaker will review the guidelines to help emergency physicians maximize their reimbursement under these new guidelines.

BUSINESS OF EMERGENCY MEDICINE

Never has it been more important to be business savvy. Circle these opportunities to learn more about the latest perspectives on scope of practice, contract negotiations, surprise billing, workforce, reimbursement, and compensation.

Reimbursement 201: Procedural RVUs That You Are Missing

Wednesday, Oct. 11 | 1-1:25 p.m.

Faculty: Michael A. Granovsky, MD, FACEP

Location: 120ABC

Procedures are the bread and butter for emergency physicians, but the RVU reimbursement can vary widely with subtle differences in the documentation. The speaker will review the nuances of procedural documentation to maximize reimbursement for procedures that you are already doing.

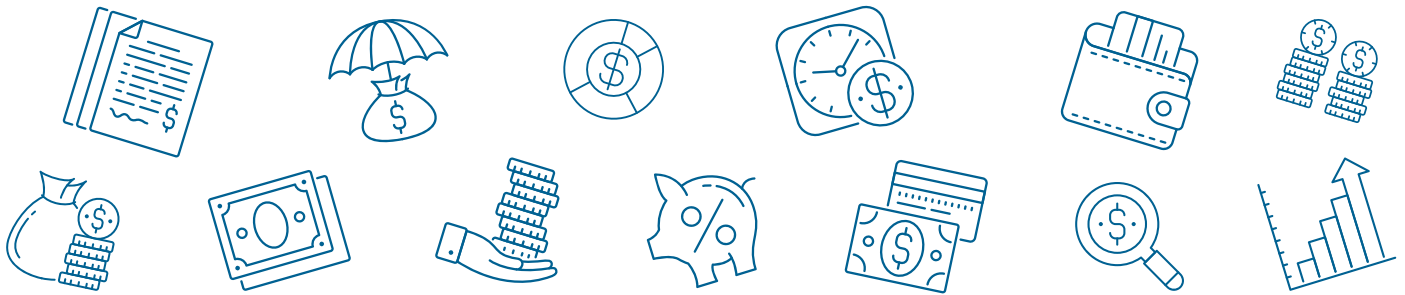
Closing General Session: Private Equity, Group Structure & Other Holiday Dinner Topics (non-CME course)

Wednesday, Oct. 11 | 1:30-2:30 p.m.

Faculty: Lawton R. Burns, PhD, MBA

Location: Terrace Ballroom

It's time for candid conversations about the business of emergency medicine. Dr. Lawton R. Burns, Professor of Management at the Wharton School, University of Pennsylvania, will deliver a Ted Talk-style summary of private equity trends in health care, its impact and where it may be heading. Then we'll have a moderated discussion with a panel of your peers offering unique perspectives on residency, academia, small and large groups, and the workforce. We'll have time for Q&A before we close with Presidential perspectives.



PERSONAL FINANCE

You work hard for your money, and you want to optimize it!
Make time for some financial management courses while you're here.

Travel Hacking 101: Making Loyalty Programs Work for You (Non-CME Course)

Tuesday, Oct. 10 | 8-8:50 a.m.

Faculty: Eric Maur, MD, FACEP; Matthew Rudy, MD, FACEP

Location: 111AB

Discover the basics of reward programs including "sweet spot" loyalty levels and fast-tracking loyalty as well as manufacturing spending and pitfalls for you to avoid from the experts.

Financial Strategies - Taxes Have Consequences: Navigating and Understanding Tax Implications

(Non-CME Course)

Tuesday, Oct. 10 | 12:30-1:20 p.m.

Faculty: William L. MacDonald

Location: 111AB

Are you a busy physician or spouse with retirement approaching soon? Learn how your retirement can result in dramatically different financial outcomes depending on the type of tax strategy you implement. Join us as William MacDonald from My Financial Coach explains the differences between "tax deferred", "taxable" and "tax-advantaged" strategies, as well as what they mean for your retirement and for all phases of your career!

Winner, Winner, Chicken Dinner: Negotiation Skills for Win-Win Outcomes

Tuesday, Oct. 10 | 4-4:25 p.m.

Faculty: Robert W. Strauss, MD, FACEP

Location: 114LEC

What do look for your first job, buying a new house, and discussing the upcoming contract for your large group have in common? They all require negotiating skills. Having the requisite knowledge can markedly improve outcomes for all parties involved. Come hear the expert teach the foundation of understanding the negotiating process and share tips to becoming the best negotiator you can be.

EQUITY & INCLUSION

ACEP is committed to making our organization and specialty more diverse, more equitable, and more complete.

Belonging: The Intersection of Diversity, Equity, and Inclusion, and Physician Well-Being

Monday, Oct. 9 | 5-5:25 p.m.

Faculty: Al'ai Alvarez, MD, FACEP

Location: 120ABC

Diversity is key to the success of medicine, yet despite efforts, trends have not been reassuring. Underrepresented in medicine encounter barriers such as imposter syndrome, microaggression, and implicit bias. Developing infrastructure addressing these barriers promote resilience and inclusivity. Belonging is critical in efforts to advance equity and inclusion. This course will present concepts and then discuss solutions from a panel of presenters.

Unlearning Implicit Bias

Tuesday, Oct. 10 | 9:30-9:55 a.m.

Faculty: Al'ai Alvarez, MD, FACEP

Location: 120ABC

Implicit bias is real and may be affecting our teaching and mentoring more dramatically than we realize. This course will teach learners to identify implicit bias and will provide techniques to unlearn these behaviors. Ultimately, this will improve the teaching and mentoring of all learners.

Emergency Care for Transgender Patients

Tuesday, Oct. 10 | 1-1:25 p.m.

Faculty: Lauren M. Westafer, DO, FACEP

Location: 113ABC

The ability to provide sensitive and effective care for transgender patients is a basic cultural competency for emergency physicians. Yet, emergency physicians receive little formal training on the care of this population which contributes to healthcare disparities. This presentation will help its attendees be able to care for this vulnerable and often marginalized population.

Cocktail Hour Chat: Working as a Female in the ED

Tuesday, Oct. 10 | 3:30-4:20 p.m.

Faculty: Diane M. Birnbaumer, MD, FACEP (Moderator); Starr Knight, MD; Gillian Schmitz, MD, FACEP; Frosso Adamakos, MD, FACEP

Location: 122AB

A perspective on working as a female in the emergency department. This course will review cases submitted by the membership and discuss them with a diverse group of women emergency physicians.

Diversity, Equity, and Inclusion: Where We Are, Where We Are Going, and Best Practices to Get There

Wednesday, Oct. 11 | 8:30-8:55 a.m.

Faculty: Italo Milton Brown, MD

Location: 103ABC

A diverse workforce is optimal for the success of teams and organizations. This course will review the progress that has been made in EM and the improvements in outcomes thus far. Techniques that can improve the diversity of EM physicians at your workplace will also be discussed. Join us to learn how to work towards a workforce that better represents our patient populations.

Dx: Medical Racism: What's the Treatment?

Thursday, Oct. 12 | 9-9:50 a.m.

Faculty: Jenice Baker, MD, FACEP

Location: 121ABC

Implicit bias and racism have promoted health care disparities that affect emergency care. The speaker will present data illustrating the results of these disparities in addition to exploring actions you can take as a citizen, emergency physician, and neighbor to create and improve public health, hospital, and departmental policies aimed to eliminate healthcare disparities.

Social Medicine That Matters Most in the Trenches

Thursday, Oct. 12 | 10-10:50 a.m.

Faculty: Italo Milton Brown, MD

Location: 119AB

Although designed for medical emergencies, EDs have become a common place where patients seek help for various problems. ED thus care for patients who present for not only heart attacks and strokes but also a variety of social ills, such as homelessness, poverty, and hunger. It is estimated that only 20% of a patient's health is shaped by medical care whereas social and economic factors account for 40% of health outcomes, highlighting the importance of concurrent medical and social interventions to advance patient health outcomes. The latest innovations in addressing the social determinants of health will be discussed to illustrate the options available within their departments.

How to Talk About Race and Medicine with Patients

Thursday, Oct. 12 | 11:30-11:55 a.m.

Faculty: Jenice Baker, MD, FACEP

Location: 103ABC

Our current climate has acknowledged racism in medicine, however, it can be difficult to have this conversation with patients when the medicine is still majority white. This lecture will highlight the importance of emotional intelligence, cultural humility, and skills to use when having conversations about race in the emergency department.

LEADERSHIP & MENTORING

In and out of the emergency department, developing your leadership skills is a worthwhile investment. Make time for these courses devoted to staff management, mentoring, and more.

Why EM? Leading the Specialty (Non-CME Course)

Monday, Oct. 9 | 11:30-11:55 a.m.

Faculty: Anne Zink, MD

Location: 109AB

This panel of ACEP leaders will speak to the value of organized medicine in making change and protecting physician rights and safety.

Turning the Tides: How to Incorporate Positive Sustainable Change

Monday, Oct. 9 | 1:30-1:55 p.m.

Faculty: James Adams, MD, FACEP

Location: 113ABC

Change has been a consistent theme in emergency medicine for the past few years. How can we actively manage change and not approach change in a reactive way? This course will identify key principles of change management to provide guidelines for positive sustainable change at any level within an organization or group.

Check YOUR Pulse Before the Patients: Bedside Resuscitation Leadership

Monday, Oct. 9 | 3:30-3:55 p.m.

Faculty: Mike Winters, MD

Location: 113ABC

Working in the ED is hectic and stressful on even the lowest acuity shifts, then you hear a crashing patient will be arriving at your resuscitation bay any moment. How do you mentally prepare yourself to focus when so much is going on around you? This session will provide you with strategies to employee in your team and in your own head to help you focus on maximizing your patients outcomes no matter how sick they are.

Applied Improvisation: Listening, Relationship-building and Effective Communication

Tuesday, Oct. 10 | 9-11 a.m., 1-3 p.m., 3:30-5:30 p.m. (multiple times offered)

Location:

This fun and powerful session is a series of energizing, on-your-feet activities based on the skills that professional improvisers use to quickly and effectively adapt and connect. Each exercise explores a skill custom designed to help emergency physicians communicate effectively and compassionately. Participants practice releasing assumptions and pre-conceived internal scripts and, instead, slowing down and listening to their patients and colleagues. The result is a trusting collaborative partnership with their patients and team. The program is designed to create a safe environment in which participants feel comfortable letting go of inhibitions, laughing and learning about themselves and each other. No one is singled out for performance in front of others – every exercise is group-based and supportive.

State-of-the-Art I: Women & Leadership (AAWEP Section)

Tuesday, Oct. 10 | 9-9:50 a.m.

Faculty: Nicole Braxley, MD, MPH, FACEP; Cristina M. Zeretzke-Bien, MD, FAAP, FAAEM, FACEP; Sarah Hoper, MD, JD, FACEP; Shannon C. Lovett, MD, FACEP; Margaret Greenwood Ericksen, MD, MSc

Location: 111AB

This session will review the state-of-the-art evidence related to women in leadership roles with historical and current context of women. The panel will describe effective opportunities for leadership advancement and highlight the critical necessity of inclusion and analysis of this topic in future EM research.

Feedback to the Future: How to Give and Receive Feedback Well

Tuesday, Oct. 10 | 10-10:25 a.m.

Faculty: Christina L. Shenvi, MD, MBA, PhD, FACEP

Location: 103ABC

Feedback is an essential element in improving our skills and developing expertise. But feedback might as well be a four-letter word for how excited we are to receive it and give it. We often also find ourselves tripping up over our words or being too harsh when giving feedback. This session will outline how to give feedback well using principles from fields such as music, sports, and education. One of the keys is creating an environment of both high expectations and psychological safety. The other side is being able to receive feedback well. This session will show how we can use a growth mindset to reframe how we receive feedback and turn it into action.

How to Be an Effective Mentor

Wednesday, Oct. 11 | 8:30-8:55 a.m.

Faculty: Arlene Chung, MD, FACEP

Location: 113ABC

Great mentoring is often the key to a person's career success. But what is great mentoring? How can we be effective mentors? How can we be great mentees? During this session, a mentoring expert will describe how to be an effective mentor and mentee today.

Top 5 Mistakes to Avoid as a Leader

Wednesday, Oct. 11 | 10-10:25 a.m.

Faculty: Christopher B. Colwell, MD, FACEP

Location: 103ABC

Learn from the mistakes of others! Avoid the pitfalls of those in leadership roles. Take your role to a new level and review strategies on how to mitigate any damage already done.

LIABILITY LESSONS

Being an emergency physician comes with liability risks,
but you can feel more empowered by educating yourself about common medicolegal issues.
ACEP23 offers a broad selection of courses to help you protect your career by learning how to limit your legal risks.

Top 5 Legal Risks in Five Minutes or Less

Monday, Oct. 9 | 12:30-12:55 p.m.

Location: 120ABC

Faculty: Kurtis A. Mayz, JD, MD, MBA, FACEP

Emergency medicine is a high-risk specialty. Recognizing these five predictable sources of medical malpractice claims and lawsuits in addition to cultivating practice and documentation strategies reduces the risk of becoming a defendant.

Medical Malpractice Documentary and Panel Discussion (Non-CME Course)

Monday, Oct. 9 | 1:30-2:20 p.m.

Faculty: Mark R. Zonfrillo, MD, MSCE; Gita Pensa, MD; Mark F. Brady, MD, MPH, MMSc; Alexander Homer; Viknesh Kasthuri

Location: 122AB

Come view the 30-minute documentary "A World of Hurt: How Medical Malpractice Fails Everyone," that follows real patients, doctors, and lawyers through the flawed malpractice system that we have. This will be followed by a lively panel discussion featuring medical malpractice experts and fellow emergency physicians Dr. Gita Pensa and Dr. Mark Zonfrillo. The filmmakers, Alexander Homer, Viknesh Kasthuri, and Dr. Mark Brady, will also be included on this panel.

Expert Witness Workshop: Protect Yourself and Advocate for the Underserved

Monday, Oct. 9 | 3:30-4:20 p.m.

Location: 111AB

Faculty: Nishi Kumar, MD; William Weber, MD, MPH (Moderator)

Harness your medical knowledge to learn the basics of expert witness work. This interactive workshop will cover the basics of legal writing and "standard of care" through practice cases led by a team of physicians and an attorney. Legal writing helps strengthen your own documentation and opens opportunities for extra income and medical advocacy.

GOTCHA! The Medical Chart: Anticipating the Lawyer's Review

Monday, Oct. 9 | 4:30-5:20 p.m.

Faculty: Diana Nordlund, DO, JD, FACEP

Location: 122AB

During this interactive course, the speaker will review emergency medicine charts and discuss how wording factors into lawsuits. You will learn how specific charting can help you avoid getting sued and/or win the case if there is litigation.

National Practitioner Data Bank: Opening Pandora's Box

Tuesday, Oct. 10 | 8:30-8:55 a.m.

Faculty: Diana Nordlund, DO, JD, FACEP

Location: 120ABC

Events reported to the NPDB affect all future licensing and credentialing. What events are reported? Is your report accurate or can it be corrected? What actions can be taken to avoid reporting or craft mutually agreed-upon language to mitigate future professional damage?

Malpractice Cases Related to Psychiatric Patients

Tuesday, Oct. 10 | 8-8:25 a.m.

Faculty: Kurtis A. Mayz, JD, MD, MBA, FACEP

Location: 113ABC

Patients presenting with psychiatric diagnoses in the ED are increasing in volume. Many practitioners struggle with the appropriate placement of these patients. The legal concerns related to the management and transfer of these patients are challenging. The speaker will provide medico-legal expertise related to legal precedent to best advise current EM clinicians.

Little People, Big Lawsuits

Tuesday, Oct. 10 | 10-10:50 a.m.

Faculty: Ramnik S. Dhaliwal, MD, JD

Location: 121ABC

18 years...kid has got you for 18 years! The pediatric-emergency medicine physician attorney speaker will identify high-risk areas of medical malpractice unique to pediatric patients, discuss liability linked to the use of consultants, and address the duty to warn of differences specific to our pediatric patient population.

Liability Concerns and Controversies Working With Non-Physician Providers

Tuesday, Oct. 10 | 2-2:25 p.m.

Faculty: Ramnik S. Dhaliwal, MD, JD

Location: 114LEC

Non-physician provider (NPP) supervision and incurred liability are frequent concerns expressed by ACEP physicians. A physician-attorney and non-physician provider will co-present with an experienced non-physician provider to address: NPP training, supervising physician liability, and independent practice.

LIABILITY LESSONS

Body Language: Unmasking Unconscious Nonverbal Communication

Tuesday, Oct. 10 | 5-5:25 p.m.

Faculty: James G. Adams, MD, FACEP

Location: 120ABC

Are your nonverbal gestures congruent with your verbal message when communicating with patients and colleagues? Are there subtle ways to use your nonverbal body language to help deliver an important and congruent message and then decipher if that message is being received positively or negatively? Recognize what the feet, arms, hands, fingers, eyes, and mouth are unconsciously saying while communicating with others. Become conscious of non-verbal gestures used that help influence and reinforce your credibility versus sabotage you as an authority, expert witness, or defendant.

High-Risk Cases in EM

Wednesday, Oct. 11 | 10-10:50 a.m.

Faculty: Rachel A. Lindor, MD, JD

Location: 115ABC

Learn how to diagnose and manage high-risk orthopedic emergencies in the ED (rhabdomyolysis, compartment syndrome, high-pressure injection injuries, open fractures, septic arthritis/osteo).

Black Box Drugs We Use: What's the Risk?

Thursday, Oct. 12 | 8-8:25 a.m.

Faculty: Kyle Weant, Pharm.D., BCPS, BCCCP, FCCP

Location: 103ABC

The black box drug list seems to be growing yet we are constantly faced with drug shortages limiting our choices when caring for patients in the ED. Many of us have used these drugs extensively in the past and feel quite comfortable with continuing this use on our patients. What is our risk when we do this? Is it a reasonable risk? The speaker will summarize black box warnings on drugs frequently used in the ED, assess the risk of this continued use, justify appropriate use in specific patients, and identify critical documentation needed when choosing to use these drugs.

Become a Star at Your Deposition: An Insider's Guide

Thursday, Oct. 12 | 8-8:50 a.m.

Faculty: Nathaniel R. Schlicher, MD, JD, MBA, FACEP

Location: 121ABC

An experienced emergency physician and attorney will present a medical case for the audience to manage with a leading charge of malpractice. A voluntary participant will be deposed. Key pitfalls and pearls of depositions will be demonstrated and discussed.

Contract Nightmares: Due Process, Force Majeure, Indemnification Clauses, and Non-Competes

Thursday, Oct. 12 | 8:30-8:55 a.m.

Faculty: Rachel A. Lindor, MD, JD

Location: 113ABC

Every major EM organization signed a letter to CMS demanding physician due process rights. Does your current contract force you to waive your due process rights? Did you agree to provide reimbursement to your employer whose negligence may have contributed to your patient's injuries by signing an indemnification clause? Can you work for the across-town competitor ED or are you bound by a non-compete clause?

Medical Errors: Prevention and Disclosure

Thursday, Oct. 12 | 10-10:50 a.m.

Faculty: Catherine A. Marco, MD, FACEP

Location: 115ABC

Medical errors are considered a nearly inevitable issue in clinical practice. How common are medical errors? Should they be disclosed to patients and families? What are the best risk management strategies to address medical errors? These and other issues will be addressed in this session.

Sign Here Please: Informed Consent, AMA, and Attestations See You in Court?

Thursday, Oct. 12 | 11-11:50 a.m.

Faculty: Kurtis A. Mayz, JD, MD, MBA, FACEP

Location: 118ABC

Patient signatures, attending signatures... Are there times when we want to be cautious about the content of the document being signed? With the continued rise of patient, autonomy comes increased risk to EPs of dual-prolonged lawsuits alleging medical malpractice AND lack of informed consent. What about signing resident's notes and patients who leave against medical advice? An MD/JD will use cases to illustrate numerous barriers to the informed consent process in emergency department patients. Who can provide consent? Is a written form required? Is the physician obligated to discuss his/her competence? When isn't informed consent required? How do courts evaluate claims of inadequate informed consent?

Practice to Penitentiary: Criminal Liability in EM Practice

Thursday, Oct. 12 | 12-12:50 p.m.

Faculty: Nathaniel R. Schlicher, MD, JD, MBA, FACEP

Location: 121ABC

Providers are coming under increasing threats of criminal reproduction for their actions in the care of their patients. A case-based exploration of current issues in criminal liability in opiate prescribing, liability for assault in the care of psychiatric patients, and negligent homicide in the place of medical malpractice.

EXHIBITORS IN THE RECRUITING/STAFFING SPACE

*AS OF SEPT. 15, 2023

ACEP Open Book

ACEP Open Book offers you unparalleled access to meaningful employer data not found elsewhere. Feel empowered to take control of your career journey.

openbook.acep.org



1908	AB Staffing Solutions
1455	Advocate Health
1042	Air Force Recruiting Services
2321	AMN Healthcare
1914	ApolloMD
1713	Aspirus Health
1011	Aya Locums
1234	Bayhealth Medical Center
2007	Berkeley Emergency Medical Group (BEMG)
1133	Caliber Healthcare Solutions
1640	Chickasaw Nation Department of Health
832	ChristianaCare
2326	CompHealth
915	Concentra
1219	Concord Medical Group
1109	Core Clinical Partners
1613	Cross Country Locums
2207	D&Y (Daniel & Yeager)
2006	Emergency Care Partners
1207	Emergency Care Specialists
2320	Emergency Medicine Specialists, Inc.
1007	Emergent Medical Associates
1530	Emergent Physicians of South Florida
1638	EMPros
1006	EMrecruits by R1
1406	Envision Physician Services
1150	Equal Justice Corporation
2009	Guthrie Clinic
1917	Hayes Locums

2328	Indian Health Service- HQ
1413	Innova Emergency Medical Associates
1629	Integrative Emergency Services
1531	Jogan Health
813	Kaiser Permanente/The Permanente Medical Group
910	Lexx Healthcare
2213	Locum Physicians United
1107	LocumTenens.com
1943	Marshfield Clinic Health System
1608	Mayo Clinic
826	Medicus Healthcare Solutions
1450	Medstaff National Medical Staffing
1840	NES Health
1112	Northwell Health
1315	Penn State Health Emergency Medicine
1127	PracticeLink, Ltd.
1627	Rhino Medical Services
2211	Samaritan's Purse
1206	SCP Health
1026	Sound Physicians
2206	TeamHealth
1836	Tribal Health
2239	U.S. Department of State, Bureau of Medical Services
1550	UPMC Emergency Medicine
1726	US Acute Care Solutions
908	Veterans Health Administration
1326	Vituity
1421	Weatherby Healthcare



Penn State Health Emergency Medicine

About Us:

Penn State Health is a multi-hospital health system serving patients and communities across central Pennsylvania. We are the only medical facility in Pennsylvania to be accredited as a Level I pediatric trauma center and Level I adult trauma center. The system includes Penn State Health Milton S. Hershey Medical Center, Penn State Health Children’s Hospital, and Penn State Cancer Institute based in Hershey, Pa.; Penn State Health Hampden Medical Center in Enola, Pa.; Penn State Health Holy Spirit Medical Center in Camp Hill, Pa.; Penn State Health St. Joseph Medical Center in Reading, Pa.; Penn State Health Lancaster Pediatric Center in Lancaster, Pa.; Penn State Health Lancaster Medical Center (opening fall 2022); and more than 3,000 physicians and direct care providers at more than 126 outpatient practices in 94 locations. Additionally, the system jointly operates various health care providers, including Penn State Health Rehabilitation Hospital, Hershey Outpatient Surgery Center, Hershey Endoscopy Center, Horizon Home Healthcare and the Pennsylvania Psychiatric Institute.

We foster a collaborative environment rich with diversity, share a passion for patient care, and have a space for those who share our spark of innovative research interests. Our health system is expanding and we have opportunities in both academic hospital as well community hospital settings.

Benefit highlights include:

- Competitive salary with sign-on bonus
- Comprehensive benefits and retirement package
- Relocation assistance & CME allowance
- Attractive neighborhoods in scenic central Pennsylvania



PennState Health

FOR MORE INFORMATION PLEASE CONTACT:

Heather Peffley, PHR CPRP - Penn State Health Lead Physician Recruiter
hpeffley@pennstatehealth.psu.edu

Penn State Health is fundamentally committed to the diversity of our faculty and staff. We believe diversity is unapologetically expressing itself through every person’s perspectives and lived experiences. We are an equal opportunity and affirmative action employer. All qualified applicants will receive consideration for employment without regard to age, color, disability, gender identity or expression, marital status, national or ethnic origin, political affiliation, race, religion, sex (including pregnancy), sexual orientation, veteran status, and family medical or genetic information.