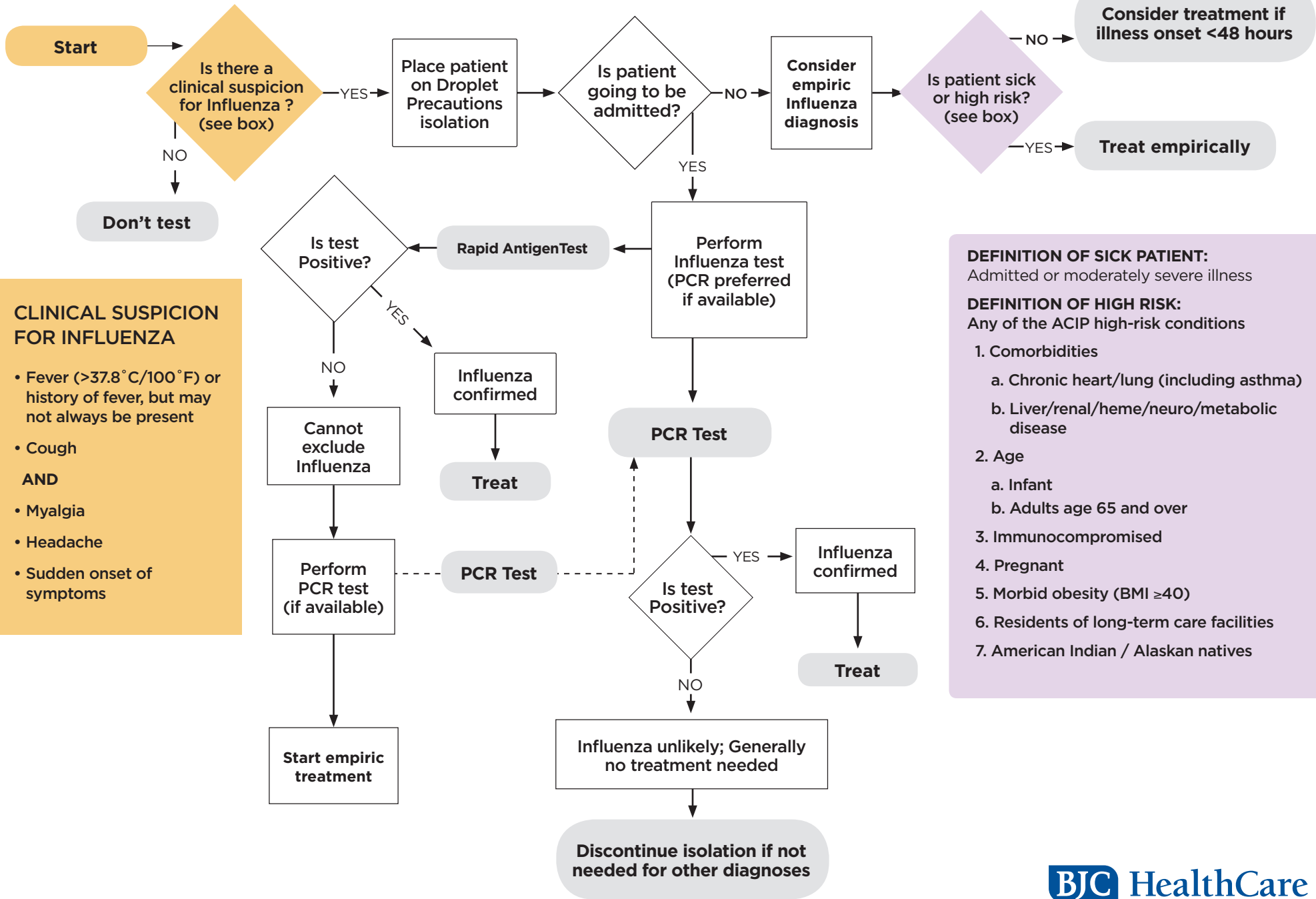


TIME PERIOD #3 Widespread Influenza Activity



CLINICAL SUSPICION FOR INFLUENZA

- Fever (>37.8°C/100°F) or history of fever, but may not always be present
- Cough
- AND**
- Myalgia
- Headache
- Sudden onset of symptoms

- DEFINITION OF SICK PATIENT:**
Admitted or moderately severe illness
- DEFINITION OF HIGH RISK:**
Any of the ACIP high-risk conditions
1. Comorbidities
 - a. Chronic heart/lung (including asthma)
 - b. Liver/renal/heme/neuro/metabolic disease
 2. Age
 - a. Infant
 - b. Adults age 65 and over
 3. Immunocompromised
 4. Pregnant
 5. Morbid obesity (BMI ≥40)
 6. Residents of long-term care facilities
 7. American Indian / Alaskan natives